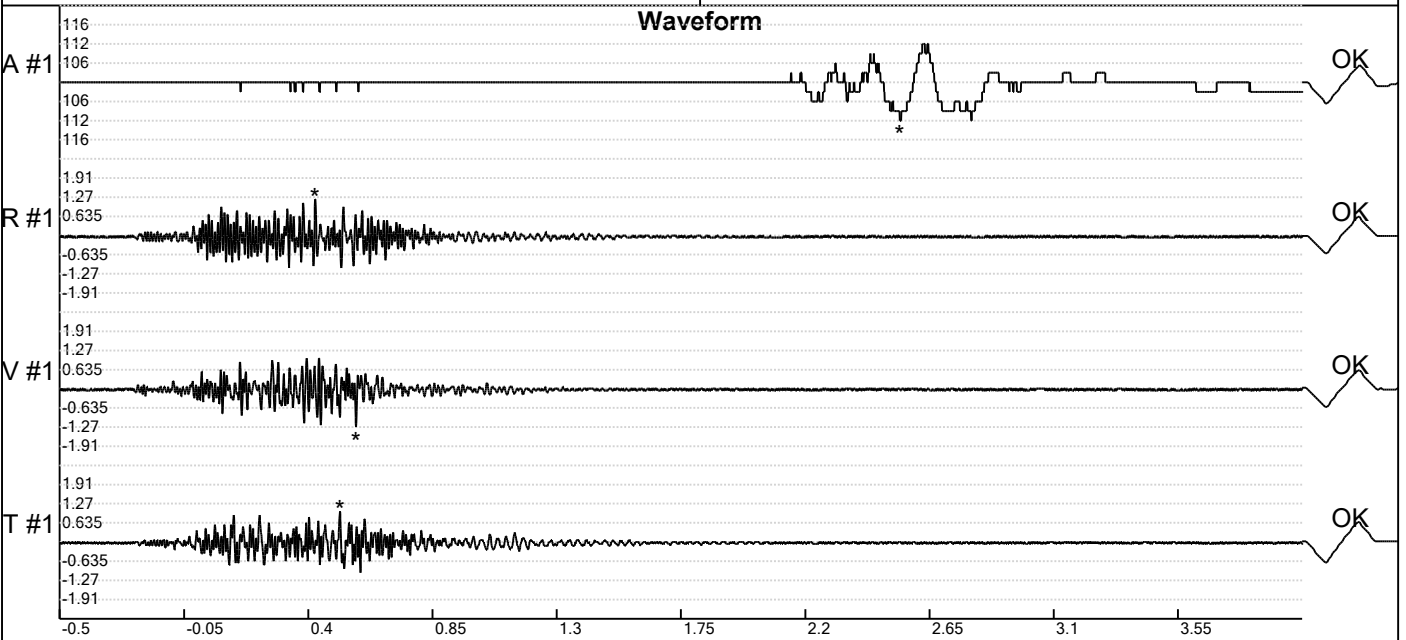


Carrière de BRS
 Comblain/Fraiture -5
 Tir du 12/03/2021
 Sismographe placé au
 261 Halleux
 4710 Comblain-au-Pont

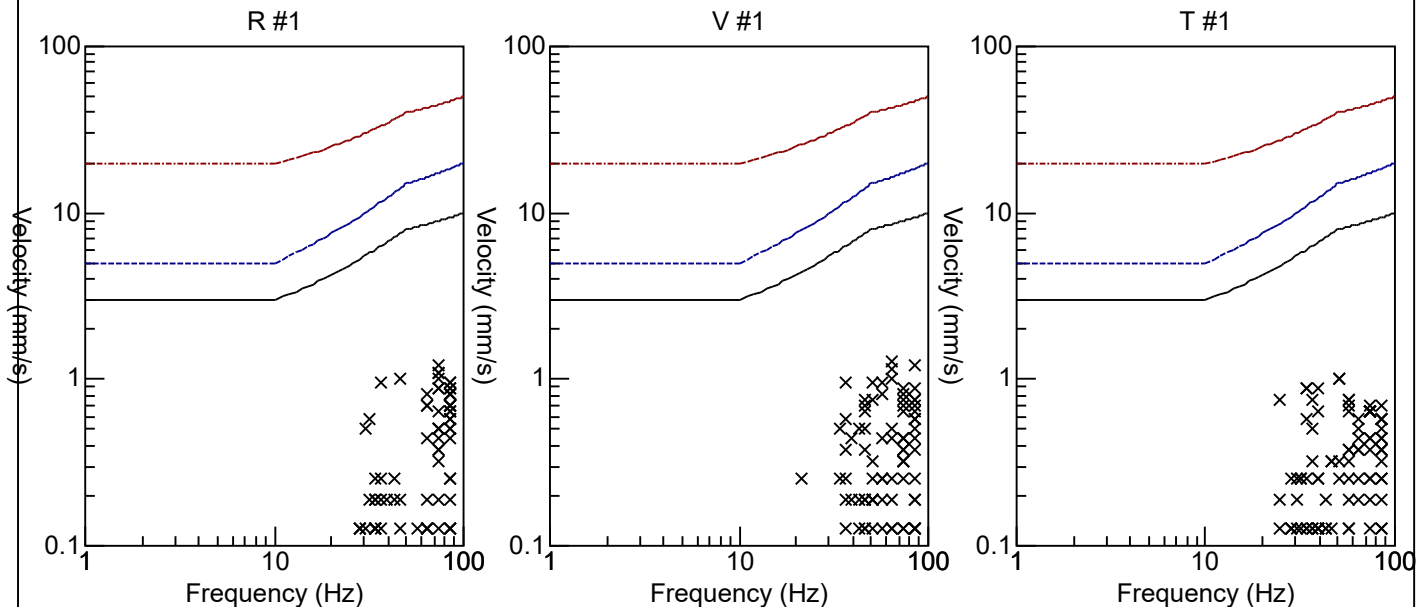
Record: 1789202103121650258.dtb
 Number: 258
 Seismograph: Mini-Seis 1789
 Type of Record: Waveform
 Date: 12-03-21 16:50:00
 Duration: 4.50 Seconds
 Sample Rate: 1024
 Pre-Trigger: 0.5 Seconds
 Seismic Trigger: 0.508 mm/s
 Acoustic Trigger: 142.1 dB
 Seismic Gain: 63.5
 Acoustic Gain: 141.9 dB
 Voltage: 6.3

Peaks and Frequencies
PPV Maximum (Geo #1): 1.27 mm/s
 Acoustic #1: 112.0 dB @ 7.8 Hz (2.541992 s)
 Radial #1: 1.21 mm/s @ 73.1 Hz (0.4248047 s)
 Vertical #1: 1.27 mm/s @ 64.0 Hz (0.5732422 s)
 Transverse #1: 1.02 mm/s @ 51.2 Hz (0.5146484 s)

Graph Information
 Time Range: -0.5 s to 4 s, Intervals: 0.4500 Seconds



Velocity vs. Frequency (DIN 4150-3 Tab 1)



Carrière de BRS
 Comblain/Fraiture -5
 Tir du 12/03/2021
 Sismographe placé au
 261 Halleux
 4710 Comblain-au-Pont

Record: 1789202103121650258.dtb
 Number: 258
 Seismograph: Mini-Seis 1789
 Type of Record: Waveform
 Date: 12-03-21 16:50:00
 Duration: 4.50 Seconds
 Sample Rate: 1024
 Pre-Trigger: 0.5 Seconds
 Seismic Trigger: 0.508 mm/s
 Acoustic Trigger: 142.1 dB
 Seismic Gain: 63.5
 Acoustic Gain: 141.9 dB
 Voltage: 6.3

Peaks and Frequencies
PPV Maximum (Geo #1): 1.27 mm/s
 Acoustic #1: 112.0 dB @ 7.8 Hz (2.541992 s)
 Radial #1: 1.21 mm/s @ 73.1 Hz (0.4248047 s)
 Vertical #1: 1.27 mm/s @ 64.0 Hz (0.5732422 s)
 Transverse #1: 1.02 mm/s @ 51.2 Hz (0.5146484 s)

Graph Information
 Time Range: -0.5 s to 4 s, Intervals: 0.4500 Seconds

